

# For Creative Minds

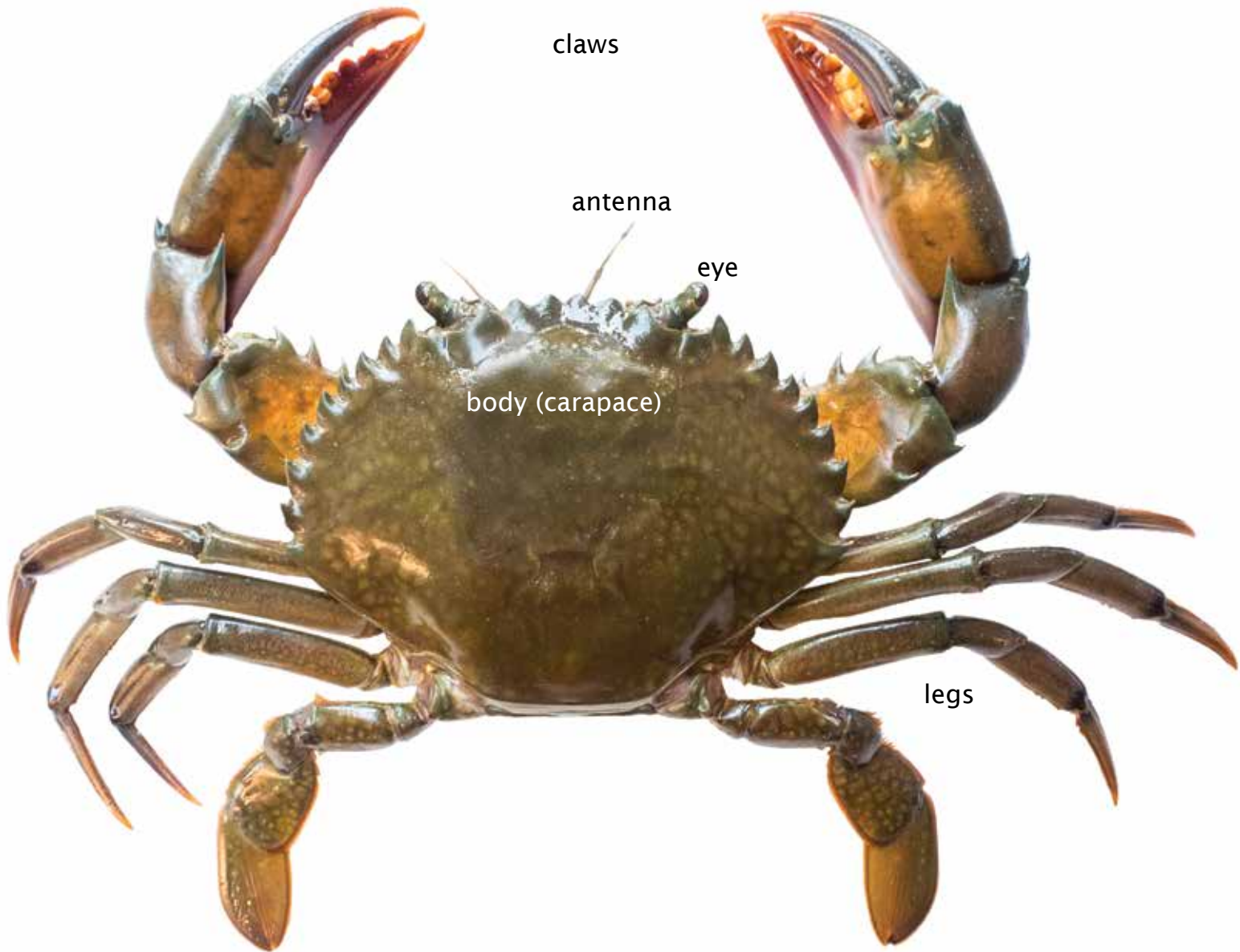
---

This section may be photocopied or printed from our website by the owner of this book for educational, non-commercial use. Visit [www.ArbordalePublishing.com](http://www.ArbordalePublishing.com) to explore all the resources supporting this book.

---

## Crab Body Parts

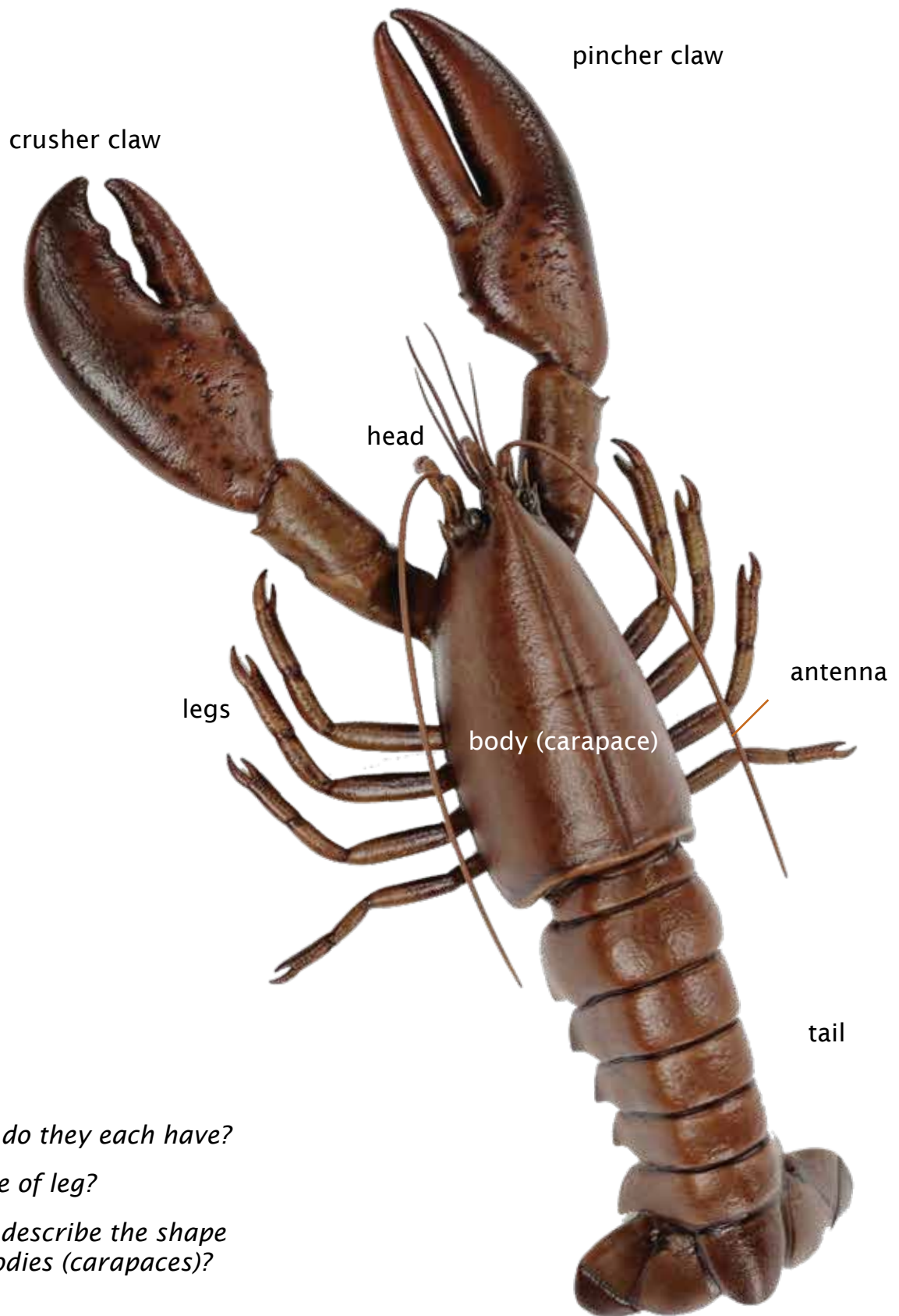
---



---

## Lobster Body Parts

---



*How many legs do they each have?*







*Are claws a type of leg?*

*How would you describe the shape of their main bodies (carapaces)?*

# Classifying Crabs and Lobsters

Within the Animal Kingdom, animals are initially divided into phyla. Within each phylum, the animals are then sorted into classes, then into orders, suborders, families and finally into a genus and species. No matter what language scientists speak, they use animals' genus and species to identify specific animals. Those names are always in Latin.

Let's see how crabs and lobsters are classified.

Phyla (Animals are not to size)					
Vertebrates		Invertebrates			
Chordata	Annelida	Arthropoda	Cnidaria	Echinodermata	Mollusca
					

You may have already studied and learned about the five classes of animals that have backbones (Vertebrates/Chordata): mammals, fish, birds, reptiles, and amphibians.

Did you know that there are actually more animals on the earth that do NOT have backbones? They are called invertebrates. Just like the five vertebrate classes, the invertebrate phylum is also broken into classes as shown above.

Crabs and lobsters (Crustaceans) are Arthropods (Arthropoda class). Other arthropods include spiders (Arachnids), centipedes and millipedes (Myriapoda), and insects (Hexapoda).

Arthropod Subphyla (Class)				
Trilobitomorpha Trilobites	Crustaceans	Myriapoda	Arachnids	Hexapoda
Extinct				

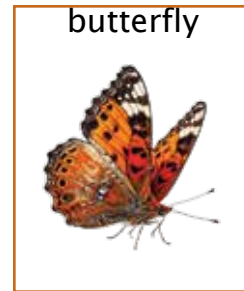
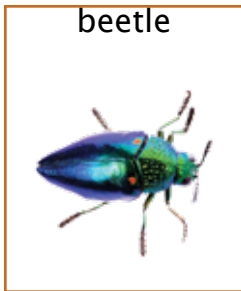
Crustaceans mostly live in the water (aquatic). They have segmented bodies and two pairs of antennae. They have a hard-shell skeleton on the outside of their bodies (exoskeleton) that they shed with a new one growing underneath (molt) as they grow.

## Match the Arthropod

Can you identify which animals belong to the Arthropod classes?

Animals shown are not to size.

- Arachnid: air-breathing animals with four pairs of legs (spiders & scorpions)  
Crustacean: aquatic animals with segmented bodies, antennae, and exoskeleton  
Hexopoda: animal with six legs and may have wings (insects)  
Myriapoda: animal with a long body and similar segments (centipedes & millipedes)



Note to adult: have children explain why they think the animal fits which group.

- Answers:  
Arachnid: black widow spider, wolf spider  
Crustacean: blue crab, fiddler crab, hermit crab, lobster, spiny lobster, shrimp  
Hexopoda: beetle, butterfly, dragonfly, fly, wasp  
Myriapoda: centipede, millepede